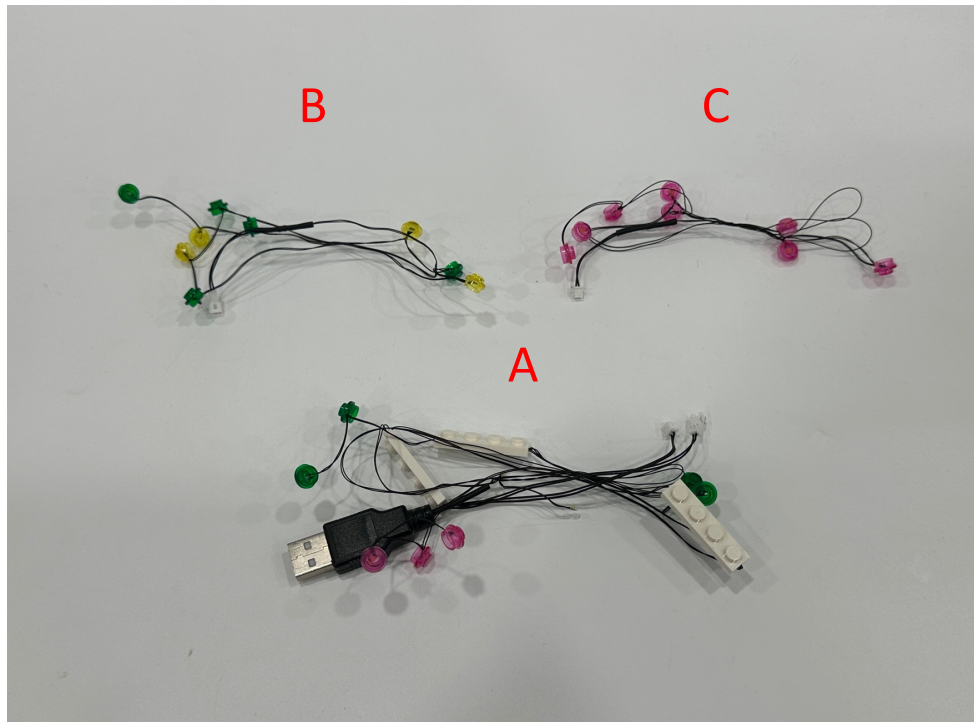


Lego 41757

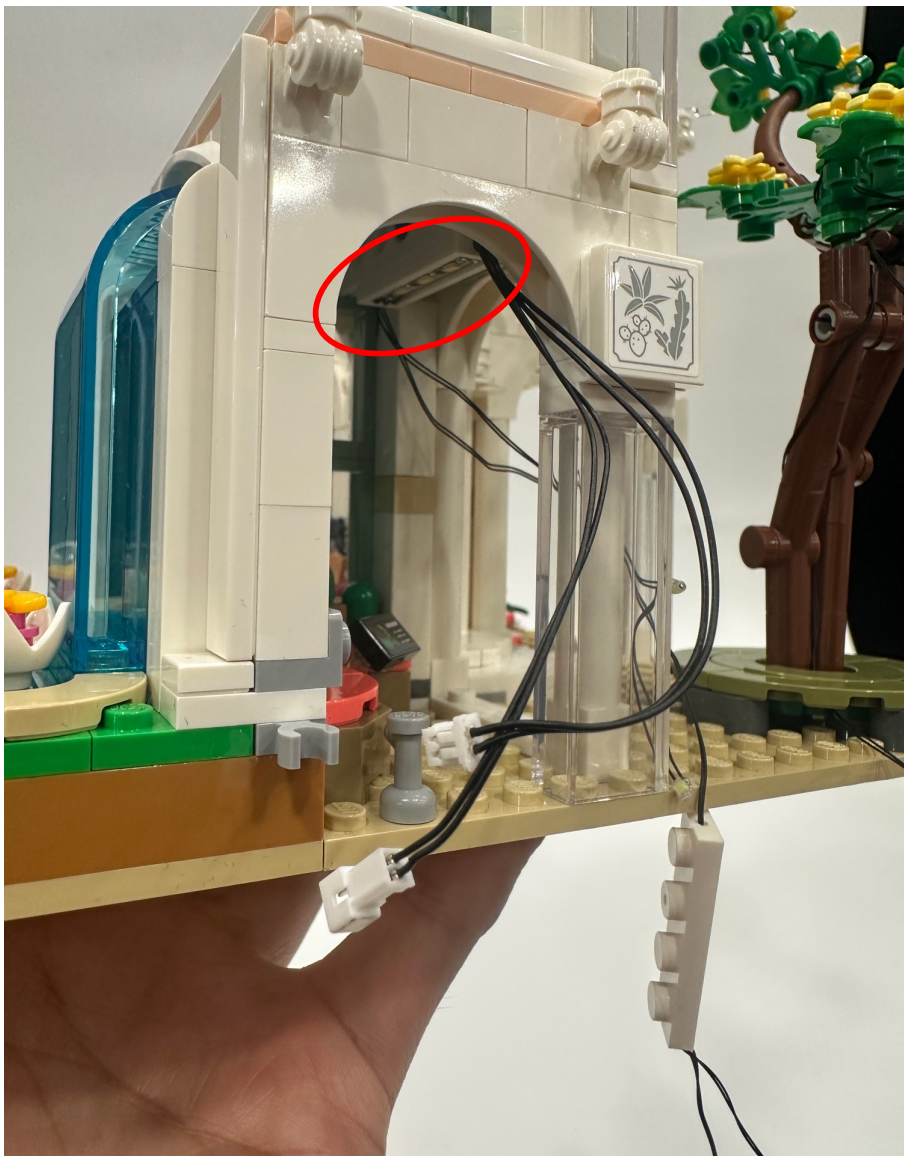
Friends Botanical Garden

Installation Guide





Take lighting part A, find the 1x4 lighting plate with two connectors attached, assemble the lighting plate as shown and the connectors should be facing the side of the garden



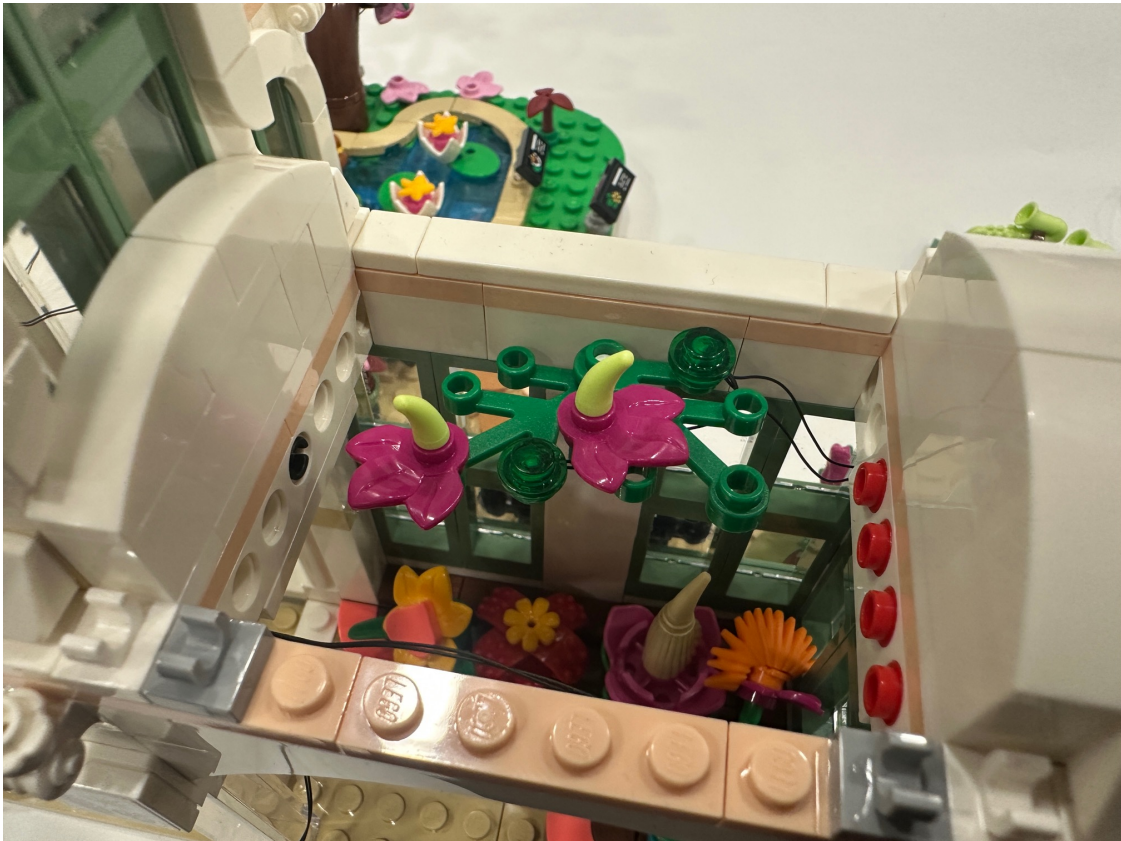
Assemble the other lighting plate to the other side (red circle)



Assemble the remain lighting plate on the end shown in red circle



The two separated green lighting round plates attached to the lighting plate in previous step would be assembled on the green parts on top



The remain lighting round plates would be moved to outside, take away the shown white parts to move the lighting round plates outside then restore the white parts



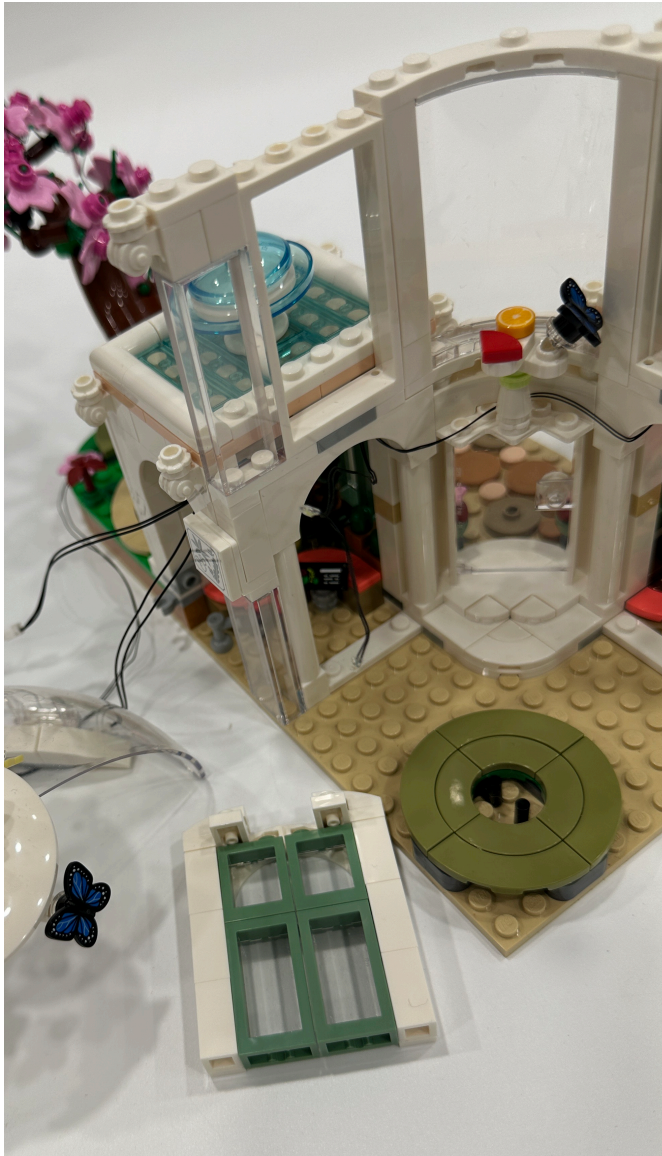
Assemble the green lighting round plates (red circle) then remove the shown parts on the pink flowers and assemble the pink lighting round plates on the flowers



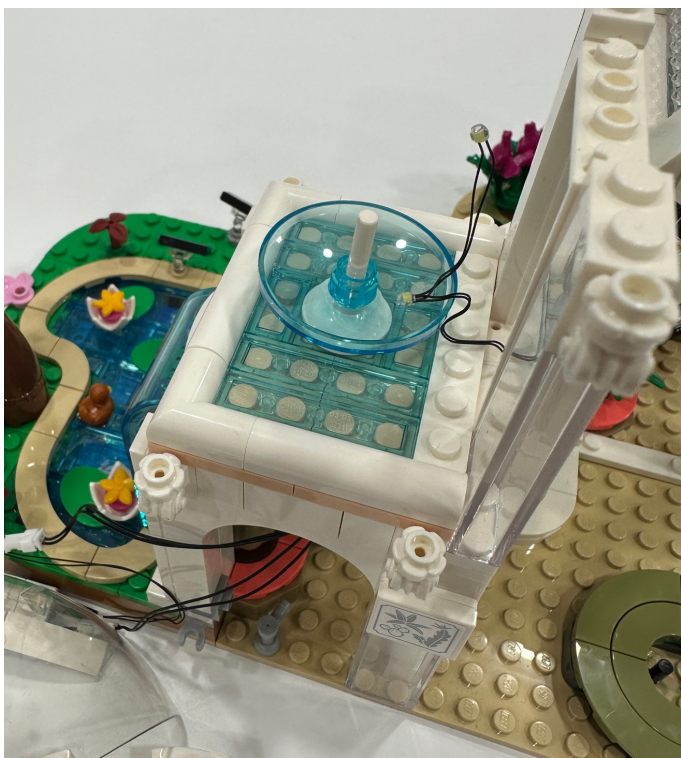
Restore the parts on top of the lighting parts after that



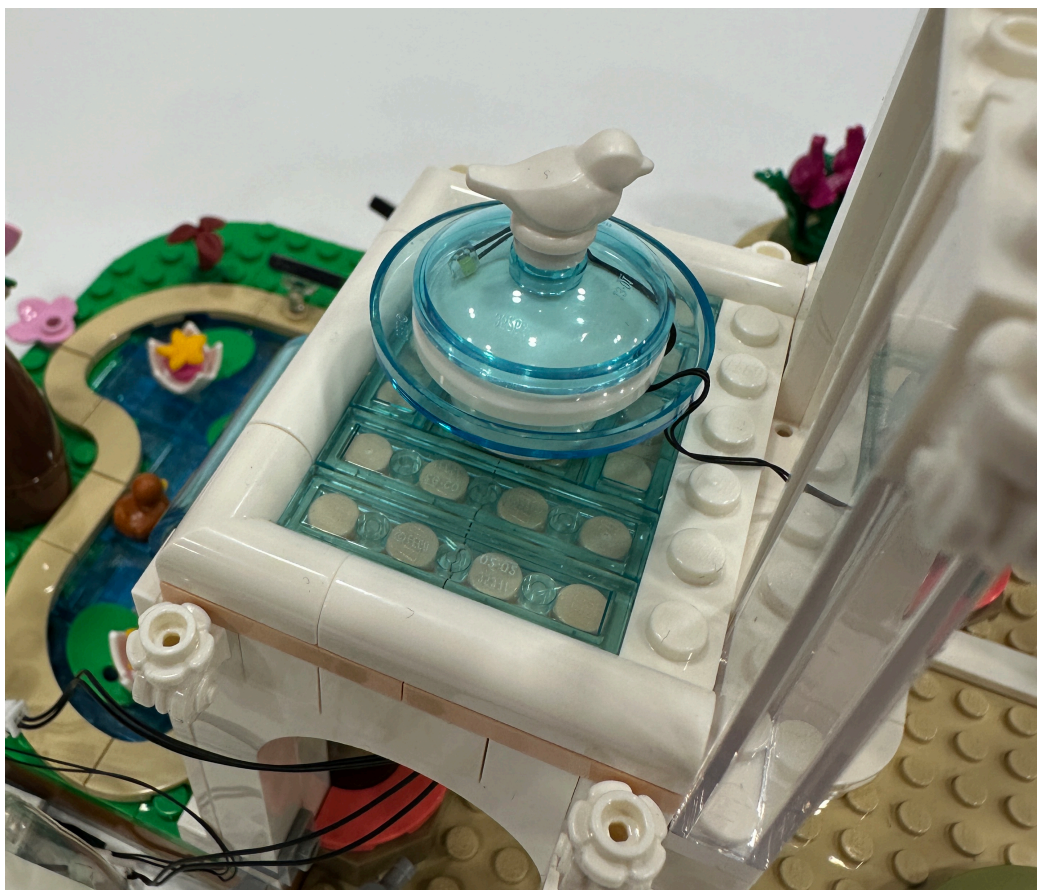
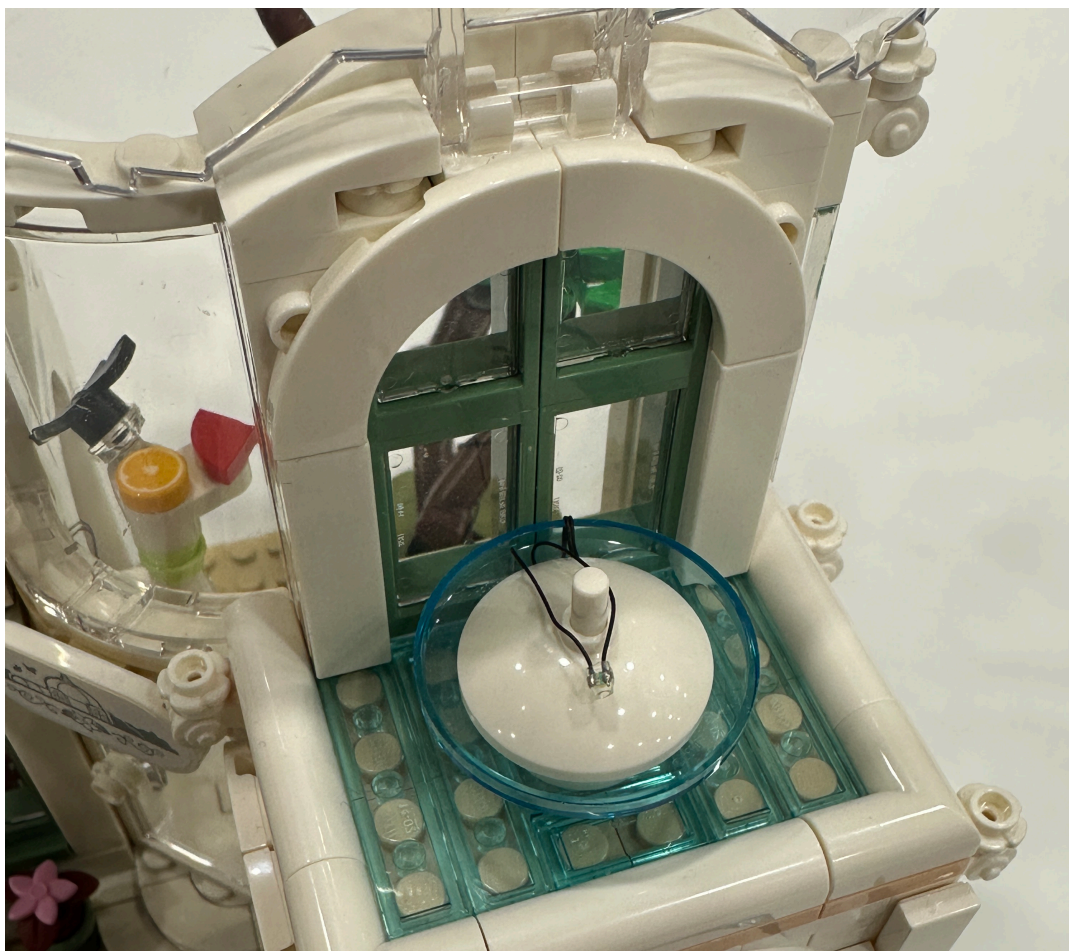
Remove the top and the windows away to get the led bulbs to the fountain



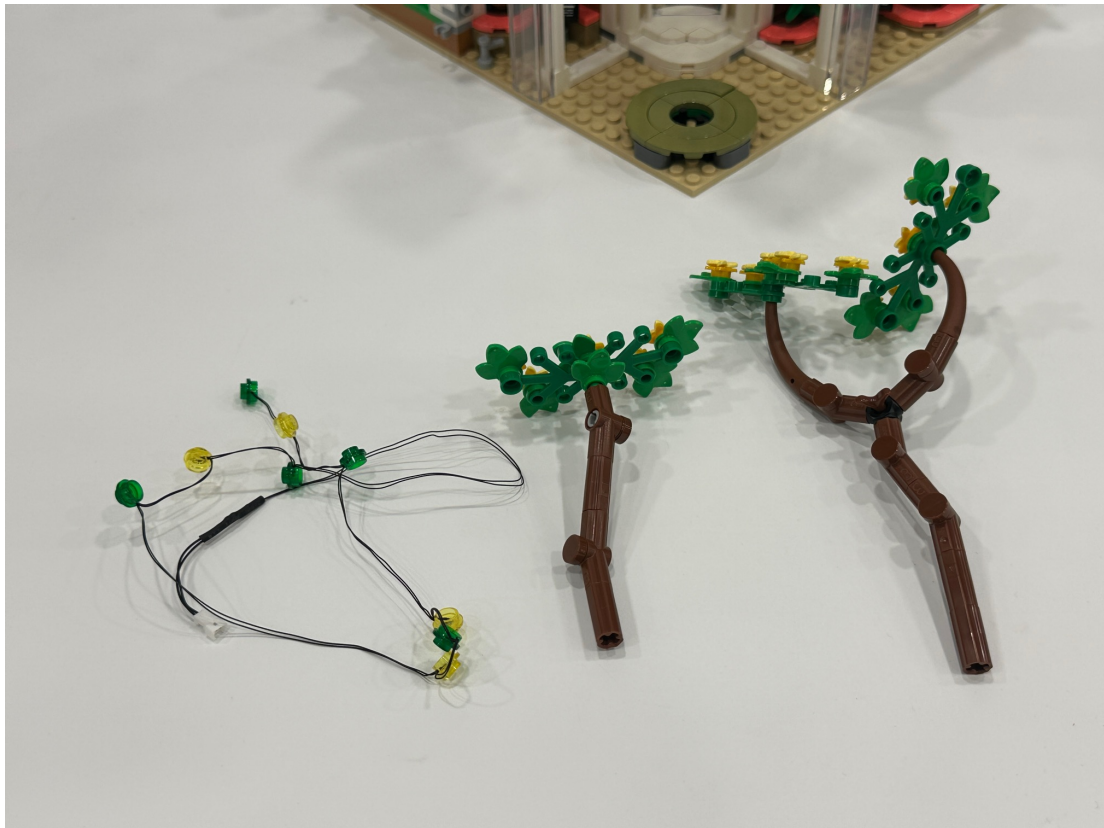
Remove the top of the fountain and place the first bulb at the bottom



Then place the other bulb above right in between the clear blue and white part



Take lighting part B to assemble them on the trees



Start from the shorter tree, assemble first three pcs of lighting round plates from the connector even on the tree



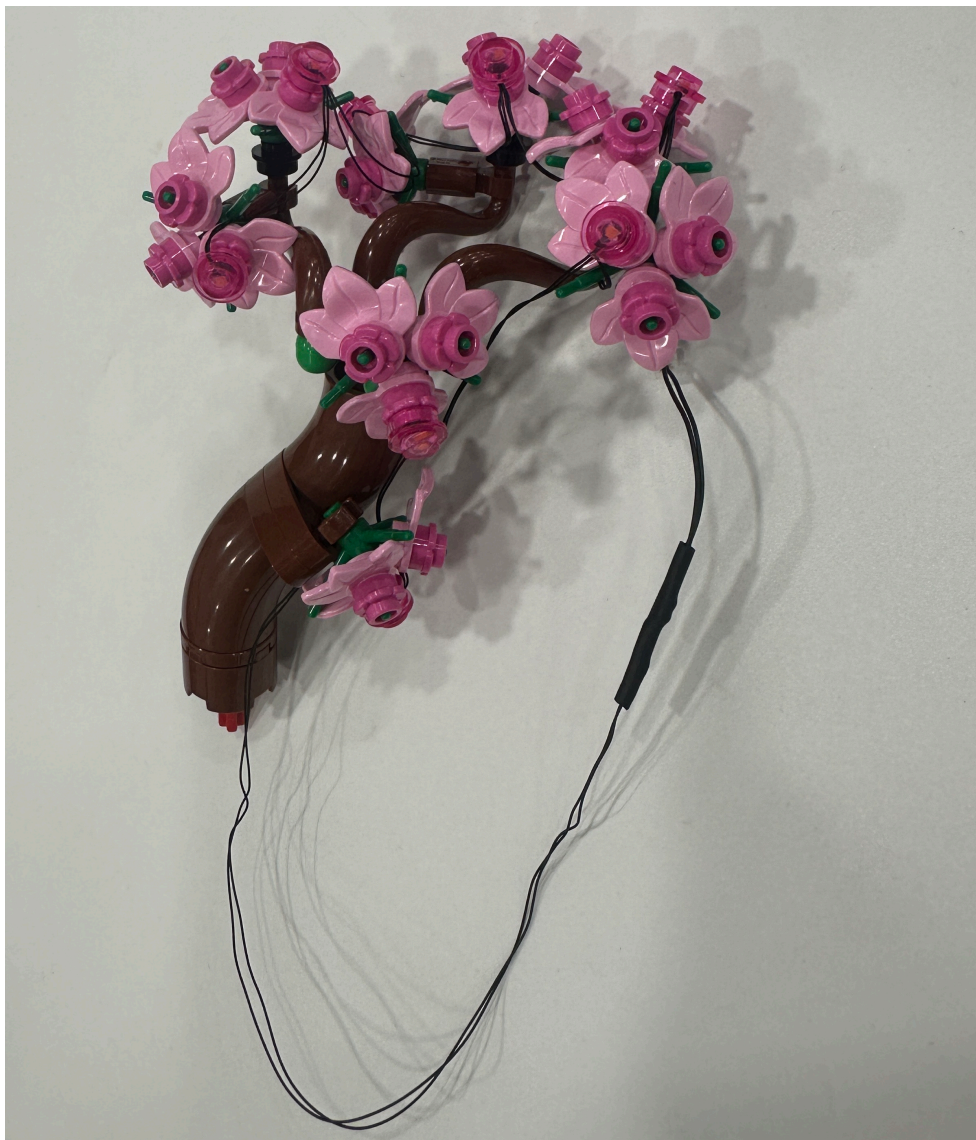
Place the tree back on the model and place the wire with connector under the tiles



Place the other tree and assemble the remain lighting round plates on it



Assemble lighting part C on the other tree, just place the round plates on the tree evenly and hide the wires deep inside the branches to made them invisible



At last connect the plugs from the trees to lighting part A then you may light up the model by the USB cable

